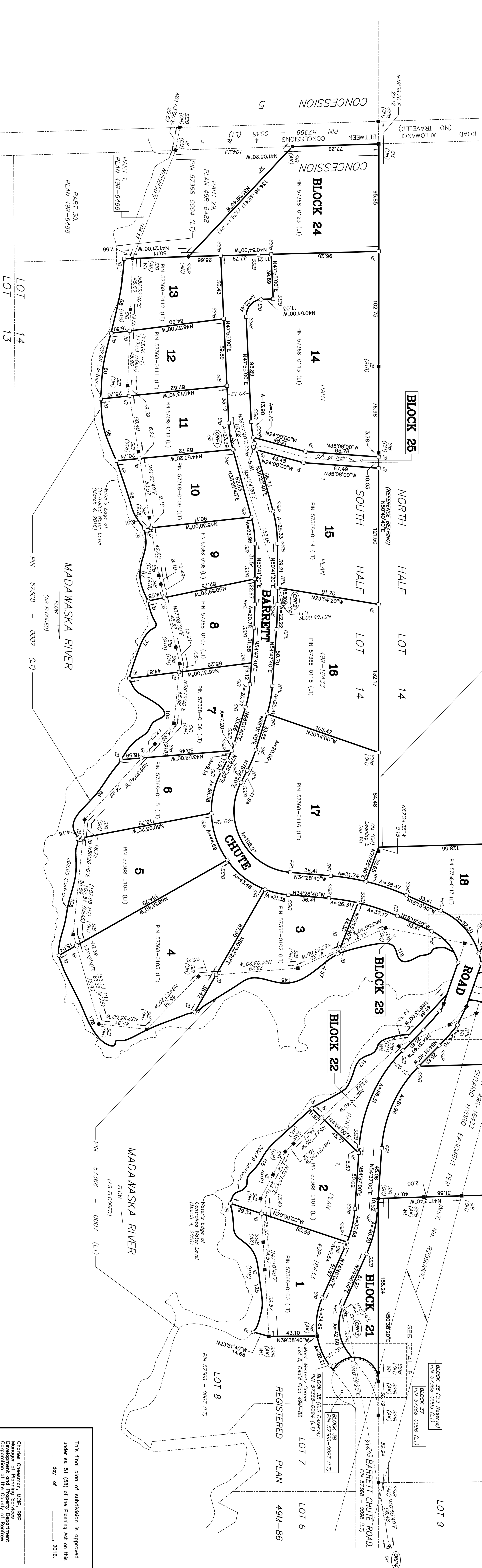
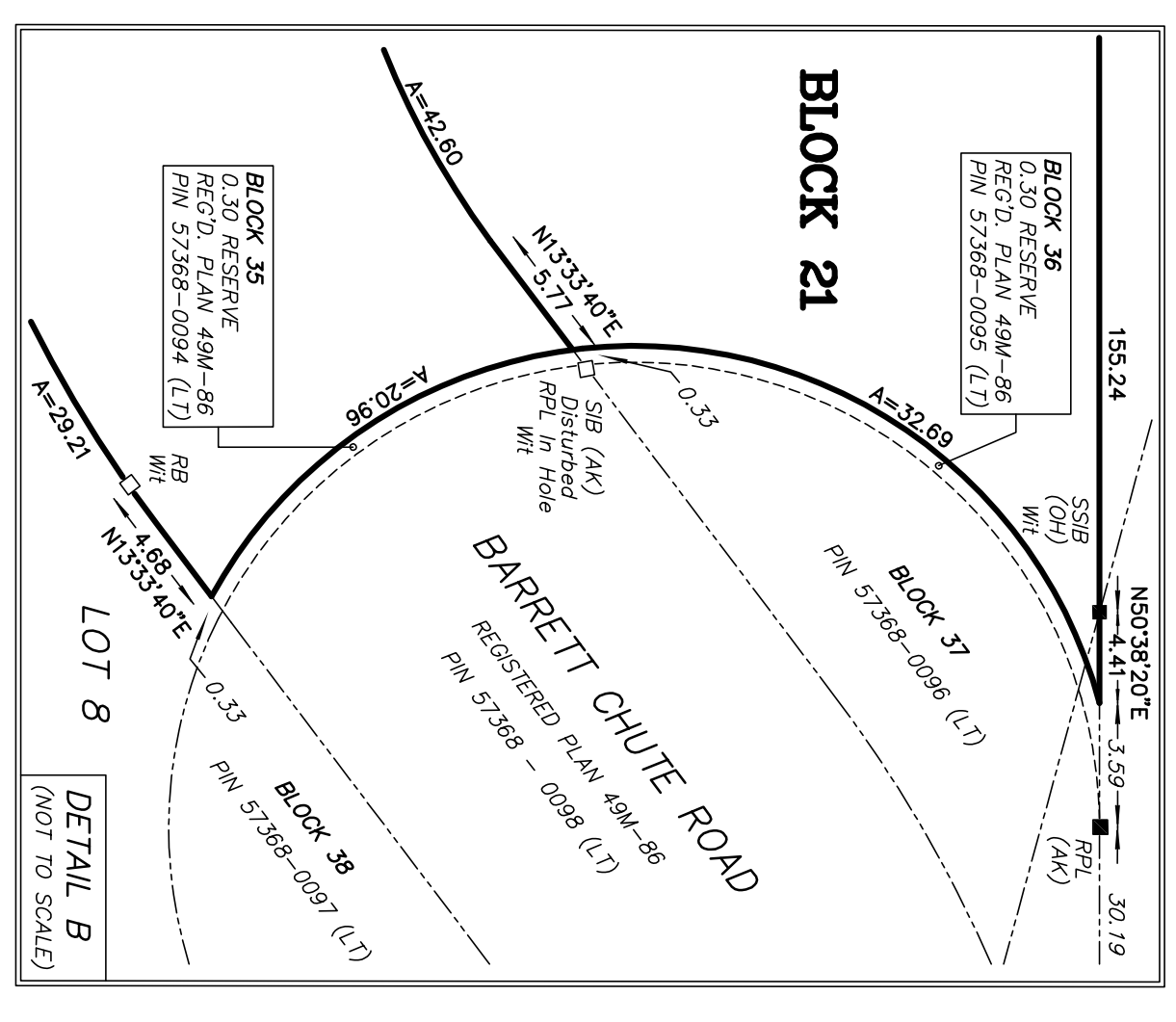
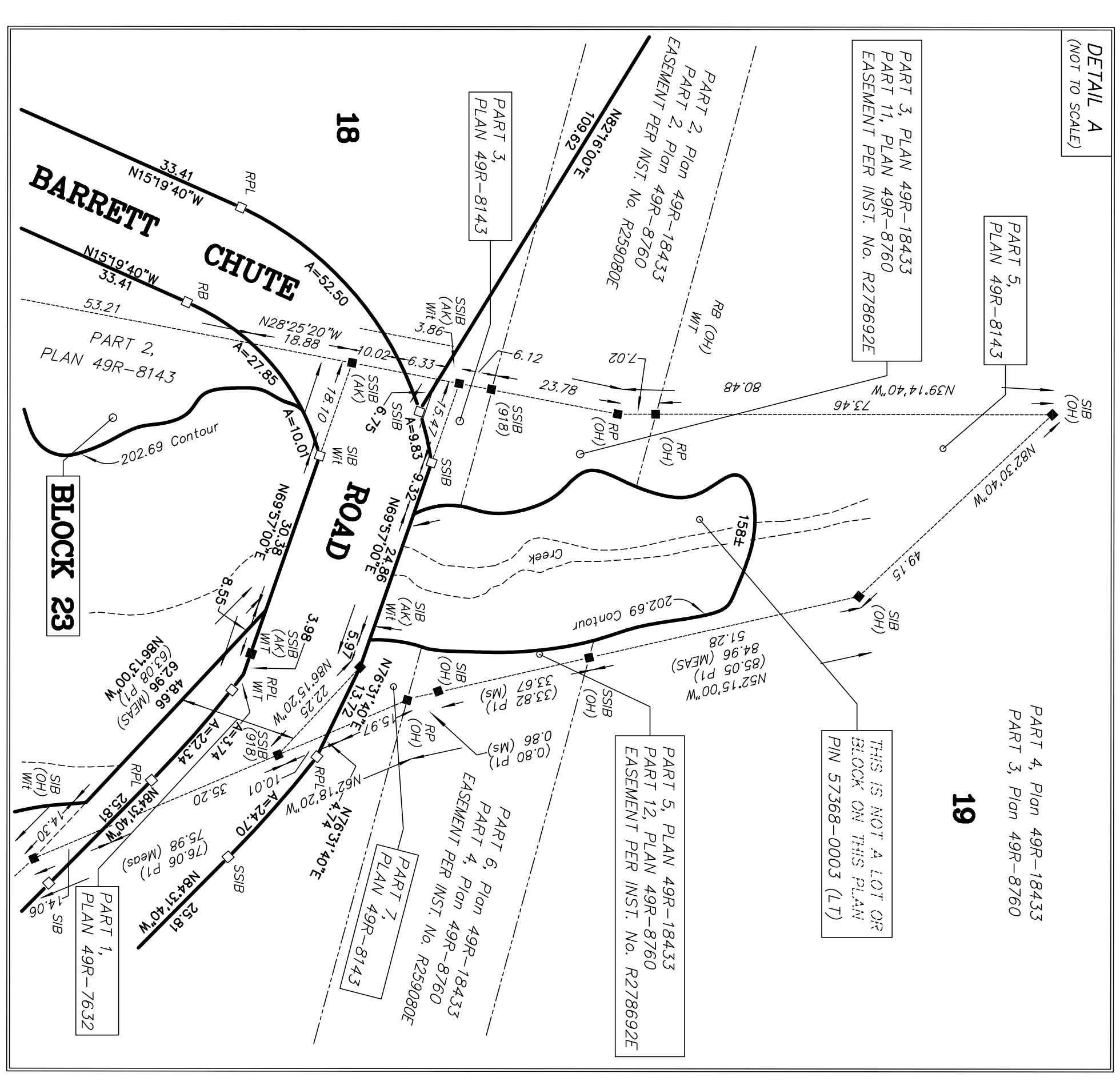


COURSE	STATION	DISTANCE TO CONTINUE
N25°24'0"E	0 + 0.00	113.33
0 + 14.4		7.2
0 + 31.2		13.4
0 + 35.6		16.2
0 + 43.8		22.4
N41°22'40"E	0 + 0.00	171.38
0 + 10.8		26.2
0 + 45.1		26.7
0 + 45.2		19.2
0 + 49.3		10.7
1 + 19.8		8.0
1 + 47.4		8.5
N27°08'00"E	0 + 0.00	81.12
0 + 10.0		14.1
0 + 35.6		14.5
0 + 44.8		8.0
0 + 46.3		19.5
0 + 46.7		34.1
N56°15'40"E	0 + 0.00	53.45
0 + 40.0		43.0
0 + 42.4		31.0
0 + 44.5		8.8
N85°30'40"E	0 + 0.00	117.26
0 + 25.0		8.0
0 + 45.5		14.8
0 + 44.8		11.1
0 + 46.5		8.2
N55°28'00"E	0 + 0.00	102.81
0 + 11.9		9.7
0 + 11.9		4.2
0 + 14.8		2.9
0 + 46.2		2.2
0 + 46.8		2.2
0 + 75.8		8.2
0 + 81.2		7.5
N34°42'40"E	0 + 0.00	83.32
0 + 42.4		16.2
0 + 47.4		13.4
0 + 48.9		14.4
0 + 62.8		9.5
N35°01'20"W	0 + 0.00	42.81
0 + 40.0		10.4
N84°50'00"E	0 + 0.00	68.36
0 + 38.8		4.7
N44°00'20"E	0 + 0.00	89.04
0 + 43.4		14.8
0 + 47.4		2.5
0 + 51.5		2.5
0 + 74.2		13.6
N63°58'40"W	0 + 0.00	86.11
0 + 16.8		7.6
0 + 40.8		2.0
0 + 42.8		6.9
0 + 47.7		9.2
N25°20'20"W	0 + 0.00	122.20
0 + 10.0		8.0
0 + 10.0		26.5
0 + 23.5		26.5
0 + 47.7		5.9
0 + 45.3		11.9
0 + 05.9		21.8
0 + 08.1		12.9
0 + 12.8		15.4
N33°14'40"W	0 + 0.00	80.48
0 + 19.9		12.0
0 + 21.8		4.5
N82°20'40"W	0 + 0.00	49.15
0 + 44.4		6.2
N82°15'00"E	0 + 0.00	85.05
0 + 44.8		13.8
0 + 48.8		6.2
0 + 46.8		2.6
0 + 46.1		4.1
0 + 49.1		3.7
0 + 49.2		3.7
N82°19'20"W	0 + 0.00	76.06
0 + 40.0		4.5
N82°13'40"W	0 + 0.00	138.45
0 + 06.8		13.5
0 + 13.2		13.2
0 + 34.7		9.5
0 + 35.1		14.2
0 + 40.2		4.2
0 + 80.5		11.8
0 + 14.2		8.6
N78°15'40"E	0 + 0.00	47.28
0 + 16.2		15.8
0 + 35.7		20.0
0 + 42.0		15.0
N47°16'40"E	0 + 0.00	128.92
0 + 41.7		25.8
0 + 35.8		11.2
0 + 61.1		0
1 + 05.4		7.0

NOTE:
DISTANCES SHOWN IN PARENTHESES REMAINING AT THE WESTERN LIMIT OF EACH COURSE.



CERTIFICATE OF REGISTRATION

PLAN _____ is registered in the Land Registry Office for the Land Titles Division of Renfrew No. 49 at _____ o'clock on the _____ the parcel shown for PIN 2016 and entered in _____ (L1).

The required consents are registered as plan document No. _____

Representative for Land Registrar _____

This plan conforms to the last certified Plan 57368-0007 (L1) and is subject to an estimated per cent No. R258900E over Lot 19, 19 and 20 and Block 21 and an estimated per cent No. R278892E over Lot 19.

PLAN OF SUBDIVISION
OR PART OF
LOT 14
CONCESSION 4
GEOGRAPHIC TOWNSHIP OF BLYTHEFIELD
TOWNSHIP OF GREATER MADAWASKA
COUNTY OF RENFREW
SCALE 1 : 1500

ADAM KASPRZAK SURVEYING LTD.

BEARING NOTE:
 BEARINGS ARE GIVEN AND ARE REFERRED TO THE NORTHWEST QUARTER SECTION OF 180°40'0"E, UNLESS OTHERWISE REFERRED TO THE CENTRAL MERIDIAN OF UTM ZONE 18, 75 WEST, REFERRED TO THE GEOGRAPHIC MERIDIAN CAN BE CALCULATED BY REFERENCE TO PLAN 498-8760.

DISTANCE NOTE:
 DISTANCES AND COORDINATES SHOWN ON THIS PLAN ARE IN METRES AND CAN BE CONVERTED TO FEET BY DIVIDING BY 0.3048.

DISTANCE NOTE:
 DISTANCES SHOWN ON THIS PLAN ARE GROUND DISTANCES AND CAN BE CONVERTED TO GRID DISTANCES BY MULTIPLYING BY A CORRECTION SCALE FACTOR OF 0.99981.

ELEVATION NOTE:
 ELEVATIONS ARE GEODETIC AND ARE REFERRED TO ONTARIO HYDRO DATUM. ELEVATIONS ARE NOT REFERRED TO BARRNETT CHUTE DAM DAM, HAVING AN ELEVATION OF 202.889 MSS.

NOTE:
 SSB PLANTED DUE TO INSUFFICIENT OVERBANK.

INTERSECTION DATA:

POINT ID	COORDINATES	EXISTING
OPR1	5 010 834.233	389 483.515
OPR2	5 010 838.944	389 572.910
OPR3	5 011 052.285	381 022.855
OPR4	5 011 068.873	381 160.581

COORDINATE VALUES ARE TO RIVAL ACCURACY PER CONVENTIONS, BE USED TO RE-ESTABLISH CORNERS OR BOUNDARIES SHOWN ON THIS PLAN.

LEGEND (As Appointed)

- SSB - IRON SSB
- SSB - STAINLESS IRON BAR
- SSB - MONUMENT ROUND
- SSB - MONUMENT SET
- SSB - ROUND IRON BAR
- SSB - ROUND IRON BAR
- SSB - FENCE PILE
- SSB - WITNESS SILEX & ROCK LTD. (1957)
- SSB - SILEX ROUGE & KASPRZAK LTD. (1957)
- SSB - ONTARIO HYDRO MONUMENT
- SSB - CONCRETE MONUMENT
- SSB - PLAN 498-8760

OWNERS CERTIFICATE

THIS IS TO CERTIFY THAT:
 1. LOTS 1 TO 20, INCLUDING BLOCKS 21, 22, 23, 24 AND 25, AND THE STREET NAMED BARRNETT CHUTE ROAD, HAVE BEEN Laid OUT IN ACCORDANCE WITH AN INSTRUMENT OF CONVEYANCE OF THE TOWNSHIP OF GREATER MADAWASKA AS A PUBLIC HIGHWAY, DATED THE 14th DAY OF SEPTEMBER, 2016.

SURVEYORS CERTIFICATE

I HAVE AUTHORITY TO BIND THE CORPORATION.
 LEO HALL, President
 BARRNETT CHUTE INC.

ADAM KASPRZAK SURVEYING LTD.
 ONTARIO LAND SURVEYOR

ADAM KASPRZAK SURVEYING LTD.
 180 BARRNETT CHUTE ROAD
 RENFREW ONTARIO
 PHONE (819) 492-9049
 REF: 15-1148 FIND

BEARING NOTE:
 BEARINGS ARE GIVEN AND ARE REFERRED TO THE NORTHWEST QUARTER SECTION OF 180°40'0"E, UNLESS OTHERWISE REFERRED TO THE CENTRAL MERIDIAN OF UTM ZONE 18, 75 WEST, REFERRED TO THE GEOGRAPHIC MERIDIAN CAN BE CALCULATED BY REFERENCE TO PLAN 498-8760.

DISTANCE NOTE:
 DISTANCES AND COORDINATES SHOWN ON THIS PLAN ARE IN METRES AND CAN BE CONVERTED TO FEET BY DIVIDING BY 0.3048.

DISTANCE NOTE:
 DISTANCES SHOWN ON THIS PLAN ARE GROUND DISTANCES AND CAN BE CONVERTED TO GRID DISTANCES BY MULTIPLYING BY A CORRECTION SCALE FACTOR OF 0.99981.

ELEVATION NOTE:
 ELEVATIONS ARE GEODETIC AND ARE REFERRED TO ONTARIO HYDRO DATUM. ELEVATIONS ARE NOT REFERRED TO BARRNETT CHUTE DAM DAM, HAVING AN ELEVATION OF 202.889 MSS.

NOTE:
 SSB PLANTED DUE TO INSUFFICIENT OVERBANK.

INTERSECTION DATA:

POINT ID	COORDINATES	EXISTING
OPR1	5 010 834.233	389 483.515
OPR2	5 010 838.944	389 572.910
OPR3	5 011 052.285	381 022.855
OPR4	5 011 068.873	381 160.581

COORDINATE VALUES ARE TO RIVAL ACCURACY PER CONVENTIONS, BE USED TO RE-ESTABLISH CORNERS OR BOUNDARIES SHOWN ON THIS PLAN.

LEGEND (As Appointed)

- SSB - IRON SSB
- SSB - STAINLESS IRON BAR
- SSB - MONUMENT ROUND
- SSB - MONUMENT SET
- SSB - ROUND IRON BAR
- SSB - ROUND IRON BAR
- SSB - FENCE PILE
- SSB - WITNESS SILEX & ROCK LTD. (1957)
- SSB - SILEX ROUGE & KASPRZAK LTD. (1957)
- SSB - ONTARIO HYDRO MONUMENT
- SSB - CONCRETE MONUMENT
- SSB - PLAN 498-8760

OWNERS CERTIFICATE

THIS IS TO CERTIFY THAT:
 1. LOTS 1 TO 20, INCLUDING BLOCKS 21, 22, 23, 24 AND 25, AND THE STREET NAMED BARRNETT CHUTE ROAD, HAVE BEEN Laid OUT IN ACCORDANCE WITH AN INSTRUMENT OF CONVEYANCE OF THE TOWNSHIP OF GREATER MADAWASKA AS A PUBLIC HIGHWAY, DATED THE 14th DAY OF SEPTEMBER, 2016.

SURVEYORS CERTIFICATE

I HAVE AUTHORITY TO BIND THE CORPORATION.
 LEO HALL, President
 BARRNETT CHUTE INC.

ADAM KASPRZAK SURVEYING LTD.
 ONTARIO LAND SURVEYOR

ADAM KASPRZAK SURVEYING LTD.
 180 BARRNETT CHUTE ROAD
 RENFREW ONTARIO
 PHONE (819) 492-9049
 REF: 15-1148 FIND

CURVE TABLE

LOT/BLOCK/ROAD	1	2	3	4	5	6	7	8	9	10	11	12	13	14	15	16	17	18	19	20	21	22	23	24	25
RADIUS	94.50	75.06	188.94	75.06	75.06	89.94	89.94	89.94	110.05	110.05	110.05	110.05	110.05	110.05	110.05	110.05	110.05	210.06	210.06	210.06	210.06	210.06	210.06	210.06	210.06
ARC	34.89	30.68	21.38	43.48	44.69	38.38	26.31	20.78	23.96	22.41	13.89	23.89	23.89	22.21	22.21	22.21	22.21	54.94	54.94	54.94	54.94	54.94	54.94	54.94	54.94
CHORD	34.40	30.55	21.31	42.87	44.33	37.96	26.29	20.77	23.69	22.38	13.89	23.89	23.89	22.21	22.21	22.21	22.21	54.94	54.94	54.94	54.94	54.94	54.94	54.94	54.94
BEARINGS	N23°59'40"E	N58°05'20"E	N63°55'00"E	N26°19'20"W	N30°30'40"W	N15°40'0"W	N32°05'00"E	N63°55'00"E	N63°55'00"E	N63°55'00"E	N63°55'00"E	N63°55'00"E	N63°55'00"E	N63°55'00"E	N63°55'00"E	N63°55'00"E	N63°55'00"E	N63°55'00"E	N63°55'00"E	N63°55'00"E	N63°55'00"E	N63°55'00"E	N63°55'00"E	N63°55'00"E	N63°55'00"E

This final plan of subdivision is approved under ss. 51 (5a) of the Planning Act on this _____ day of _____ 2016.

Chloë Chastelain, MPP, MPP
 Manager of Planning Services
 Department of Planning and Development
 Corporation of the County of Renfrew